

DOME/SCOPE SYNCHRONIZATION PROCEDURE

STARTUP

This procedure is to be followed once the dome has been opened and the telescope initialized.

- 1) Switch to SYNC mode. The switch is located on the side of the Control Box. The scanner will beep 3 times, illuminate, and then may beep once more.

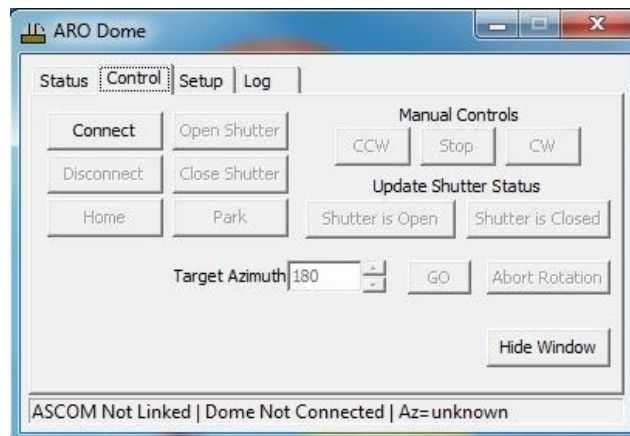


- 2) Open the ARO Dome window. The icon is located on the task bar.
- 3) Click 'Connect' in the ARO Dome window. The dome will move to the nearest bar code, beep and then stop. Minimize the window.
- 4) Left click 'Dome Sync' in the bottom task bar. A script will run and the dome will move to the scope location. Minimize the Abbey Ridge Auto Pilot V0.98 window. The dome will move periodically to keep the scope in the slot opening.

SHUT DOWN

Follow this procedure prior to shutting down the scope.

- 5) Right click on the ARAP V0.98 icon in the bottom task bar and then left click 'Close window'.
- 6) Left click on the ARO Dome icon in the bottom task bar.



- 7) Left click 'Connect' and then 'Park'. The dome will go to the predefined dome park position.
- 8) Left click 'Disconnect'.
- 9) Exit out of the ARO Dome window.
- 10) Move the toggle switch to HANDPAD mode. The switch is located on the side of the Control Box.